



## WGBH

### LOCATION

Brighton, MA

### COMPLETION

2007

### AREA

156,000 GSF Renovation

153,000 GSF New

### COST

85 Million

### OWNER/DEVELOPER

WGBH Public Broadcasting Station

### DESIGN TEAM

Polshak Partnership

Janson Design Group

The Systems Group

Le Messier Consultants

R.G Vanderweil Engineers

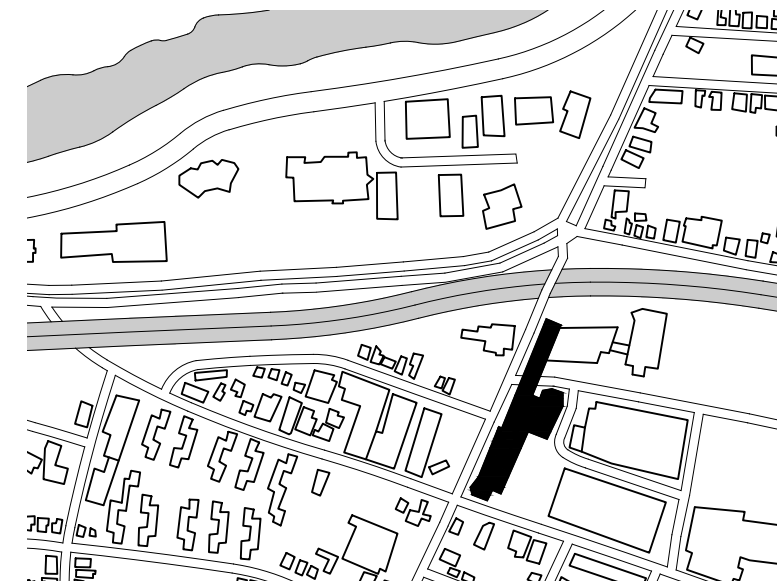
Hargreaves Associates

Vanasse Hangen Brustlin Inc.

DVS Associates

### CONSTRUCTION MANAGER

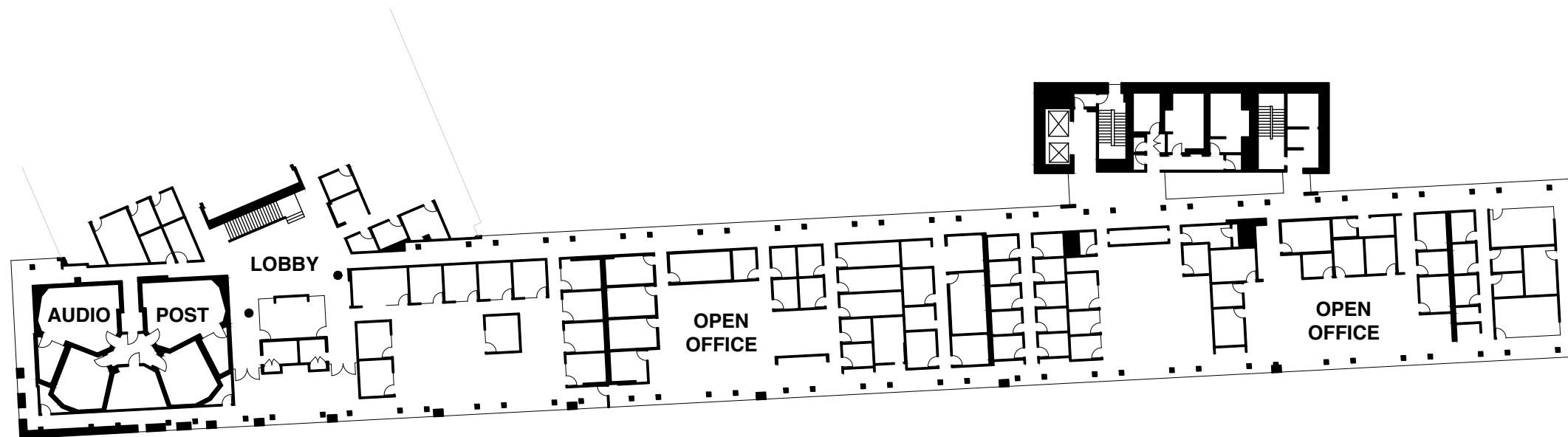
Macomber Builders



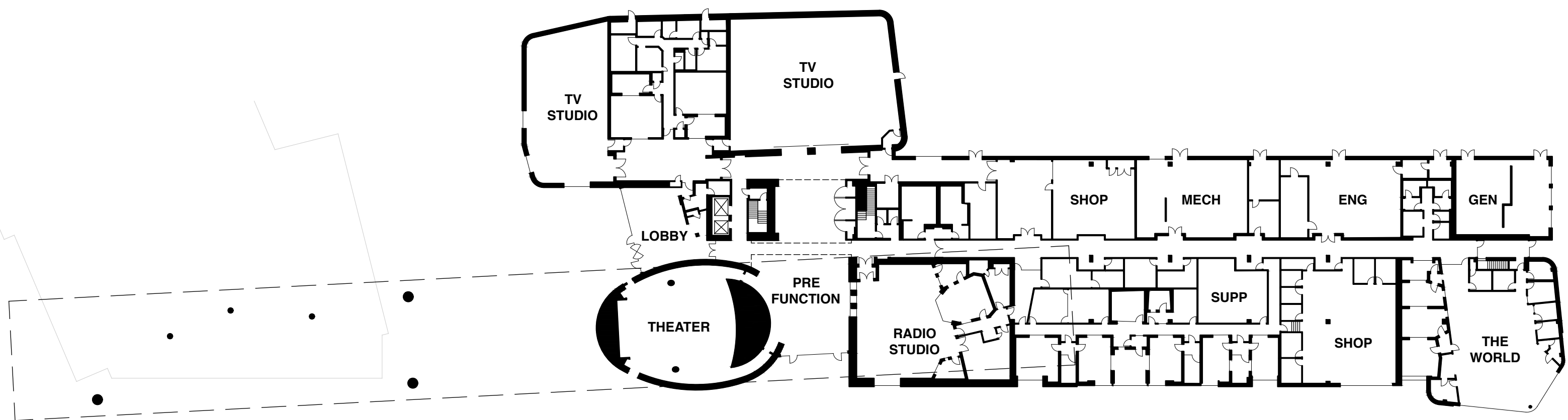
# WGBH

## PROGRAM

- Performance Hall
- 210 Seat Theater
- 6 On-Air Radio Studios
- 2 TV Studios
- Central Archive
- Boardroom, Cafe
- Administrative and Office Space
- Event Lobby



LEVEL 06



LEVEL 01



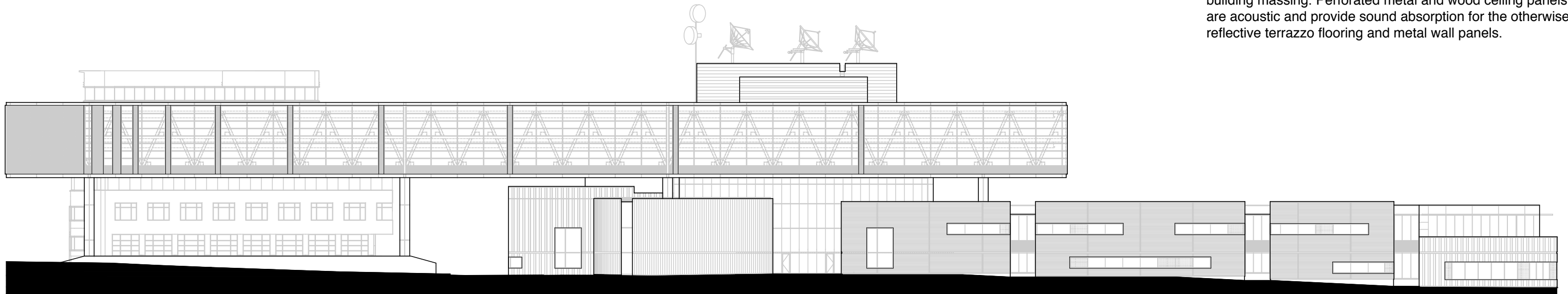
## WGBH

### PROJECT DESCRIPTION

This new facility for a public broadcasting station reconnects the creative content makers to the administrative/management teams and technical operations. An existing 7-story office building is bridged to technical recording, and production facilities with a 500 foot long spanning structure. The two story building to the south houses public amenity spaces with screening rooms, performance hall and theater, as well as the technical spaces required for TV production and broadcast radio.

One of the defining elements of the building is the steel frame structure that spans a public roadway. A Warren truss was assembled in 5 2-story sections and is supported on the south end with 6 super columns and the existing building to the north. The structure's orientation places it slightly off axis but within view of the I-90 turnpike feeding the greater Boston area. Clad with a structurally glazed and unitized curtain wall it also supports a series of LED modules that allow the façade to become a digital mural creating an iconic presence for the institution. Interior circulation through the truss is pushed to the perimeter and activates the facade where it is visible to vehicular and pedestrian traffic below.

The buildings public and office interiors were developed separately from the technical spaces. Reception Lobby and Event spaces are finished with a similar coil coated formed aluminum wall panel that is used on the exterior of the building. Interior detailing uses stainless steel trim, framing and protective finishing elements. The sculptural forms of the theater and recording spaces are perceived to be continuous from outside to interior. Glass railings form the sides of an interior bridge that echoes the formal organization of the building massing. Perforated metal and wood ceiling panels are acoustic and provide sound absorption for the otherwise reflective terrazzo flooring and metal wall panels.





## WGBH

### INVOLVEMENT

DD, CD, CA  
Staff Architect (7 months)

#### Interiors Detailing

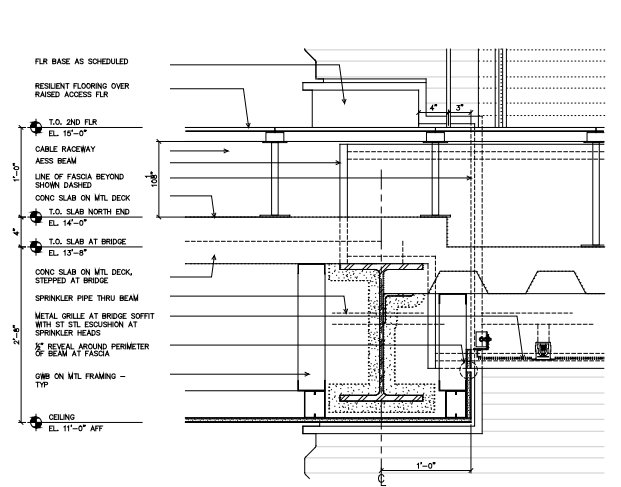
- Detailing of Event and Reception Lobbies
- Coordination of RCP, MEP, Security and life safety requirements at public amenity spaces.
- Door type detailing, scheduling, hardware set integration for glass hollow metal and wood.
- Material specification research, product documentation; ornamental metals, wood paneling, glass and glazing, flooring, ceiling systems, light fixture, a/v and security.

#### Exterior Wall

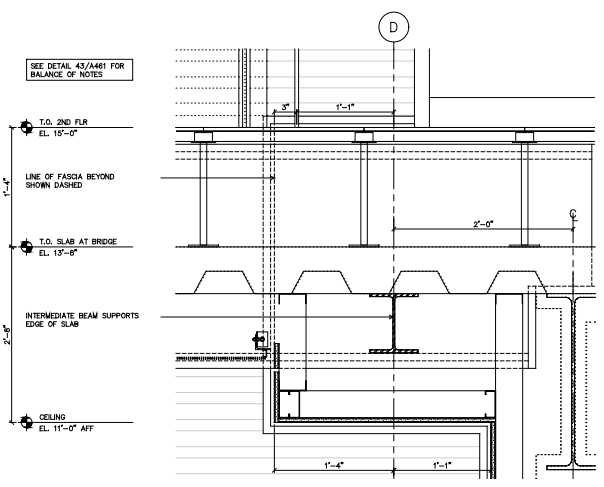
- Entrance canopy detailing, metal panel, AESS steel, curtain wall and structural steel coordination.
- Lighting, storm water, revolving door and security integration.



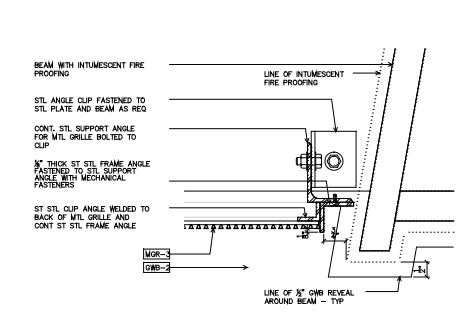
# WGBH



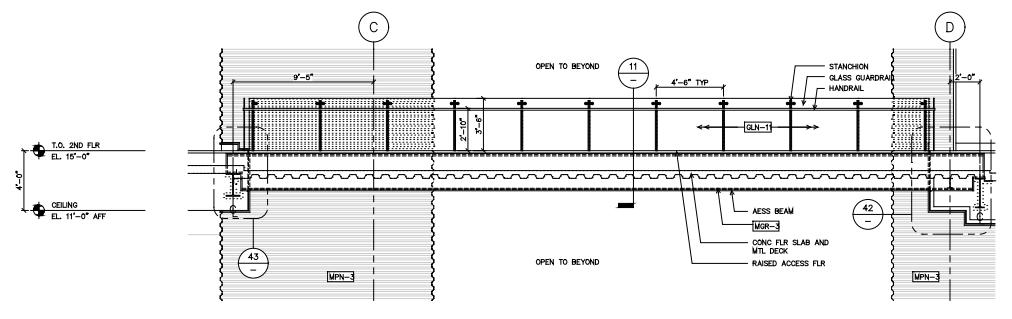
43 SECTION DETAIL  
SCALE: 1/8" = 1'-0"



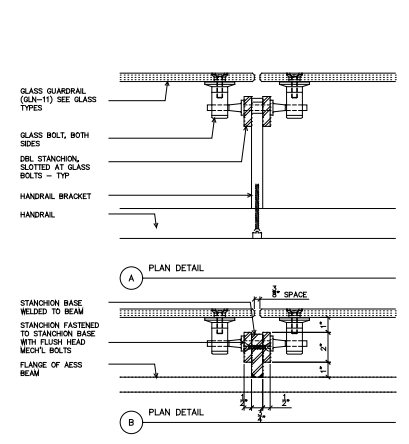
42 SECTION DETAIL  
SCALE: 1/8" = 1'-0"



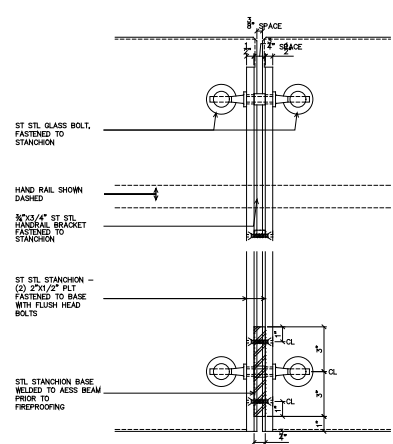
51 METAL GRILLE DETAIL  
SCALE: 6" = 1'-0"



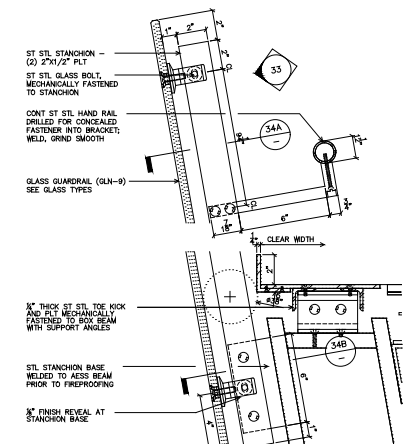
50 LOBBY BRIDGE - NORTH / SOUTH SECTION  
SCALE: 1/8" = 1'-0"



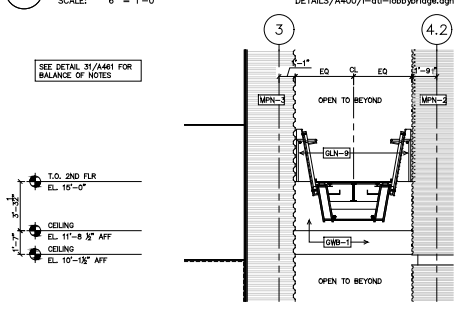
34 PLAN DETAIL  
SCALE: 3" = 1'-0"



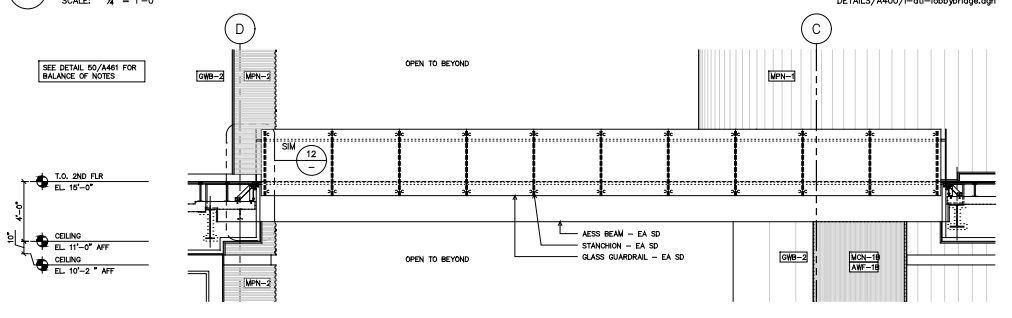
33 ELEVATION DETAIL  
SCALE: 3" = 1'-0"



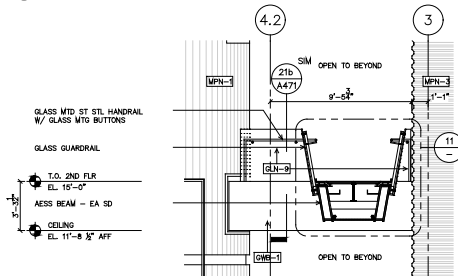
32 SECTION DETAIL  
SCALE: 3" = 1'-0"



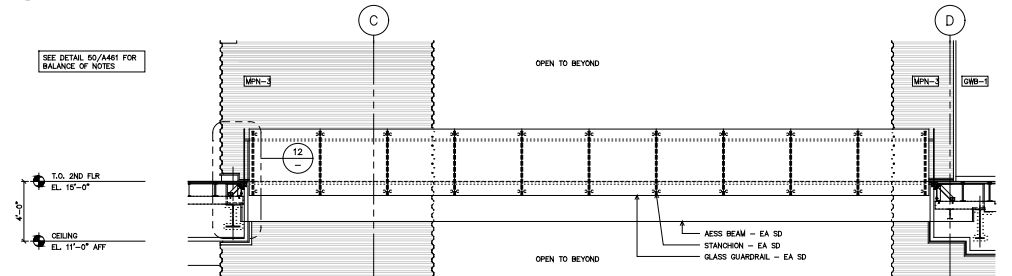
41 LOBBY BRIDGE ELEVATION LOOKING SOUTH  
SCALE: 1/8" = 1'-0"



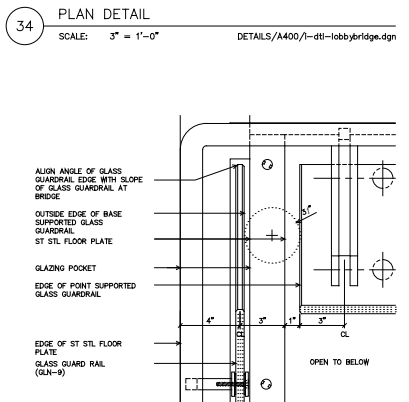
40 LOBBY BRIDGE ELEVATION LOOKING WEST  
SCALE: 1/8" = 1'-0"



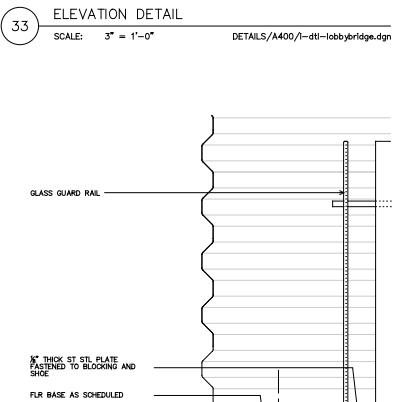
31 LOBBY BRIDGE ELEVATION LOOKING NORTH  
SCALE: 1/8" = 1'-0"



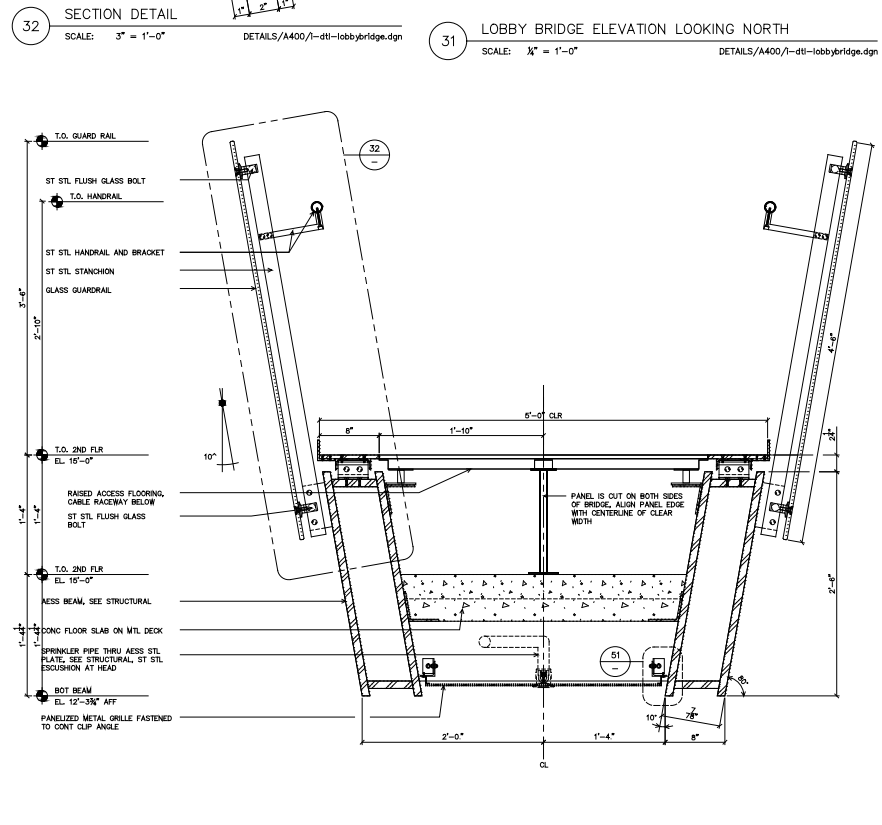
30 LOBBY BRIDGE ELEVATION LOOKING EAST  
SCALE: 1/8" = 1'-0"



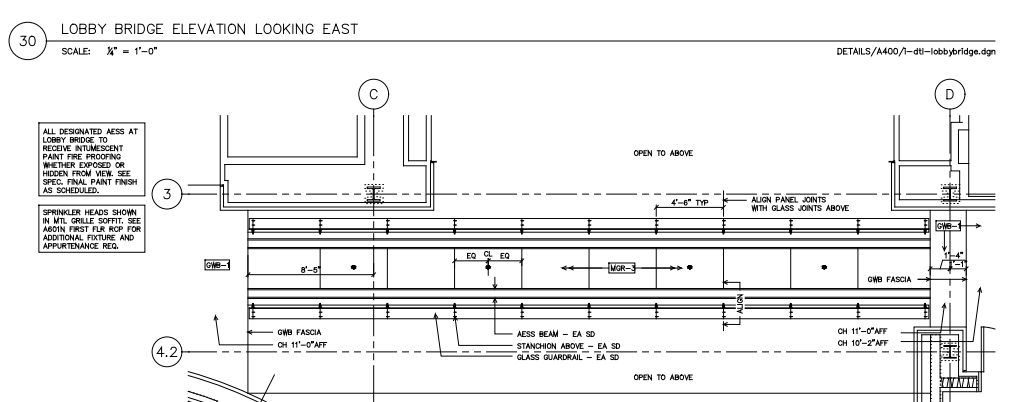
23 PLAN DETAIL  
SCALE: 3" = 1'-0"



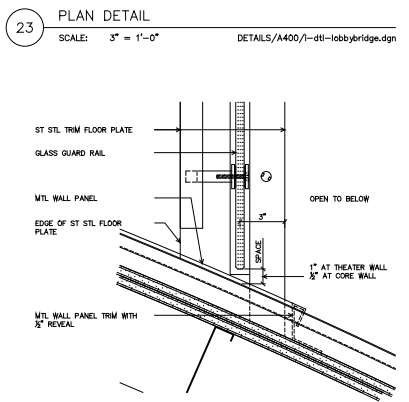
12 SECTION DETAIL  
SCALE: 1/8" = 1'-0"



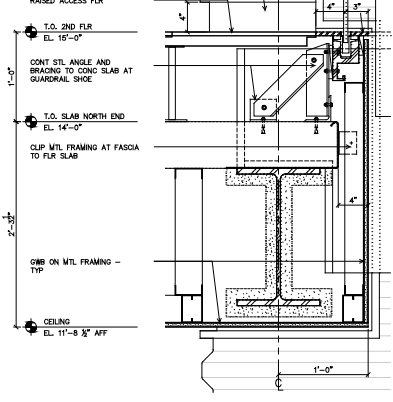
11 LOBBY BRIDGE - EAST / WEST SECTION  
SCALE: 1/8" = 1'-0"



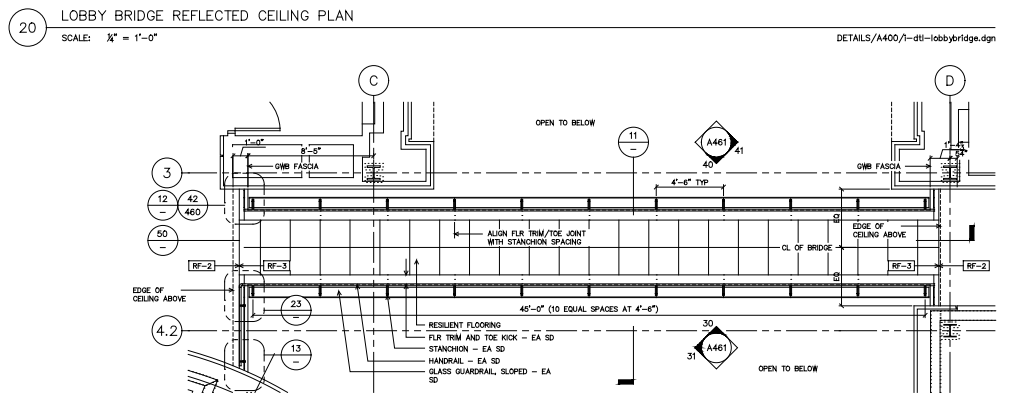
20 LOBBY BRIDGE REFLECTED CEILING PLAN  
SCALE: 1/8" = 1'-0"



13 PLAN DETAIL  
SCALE: 3" = 1'-0"

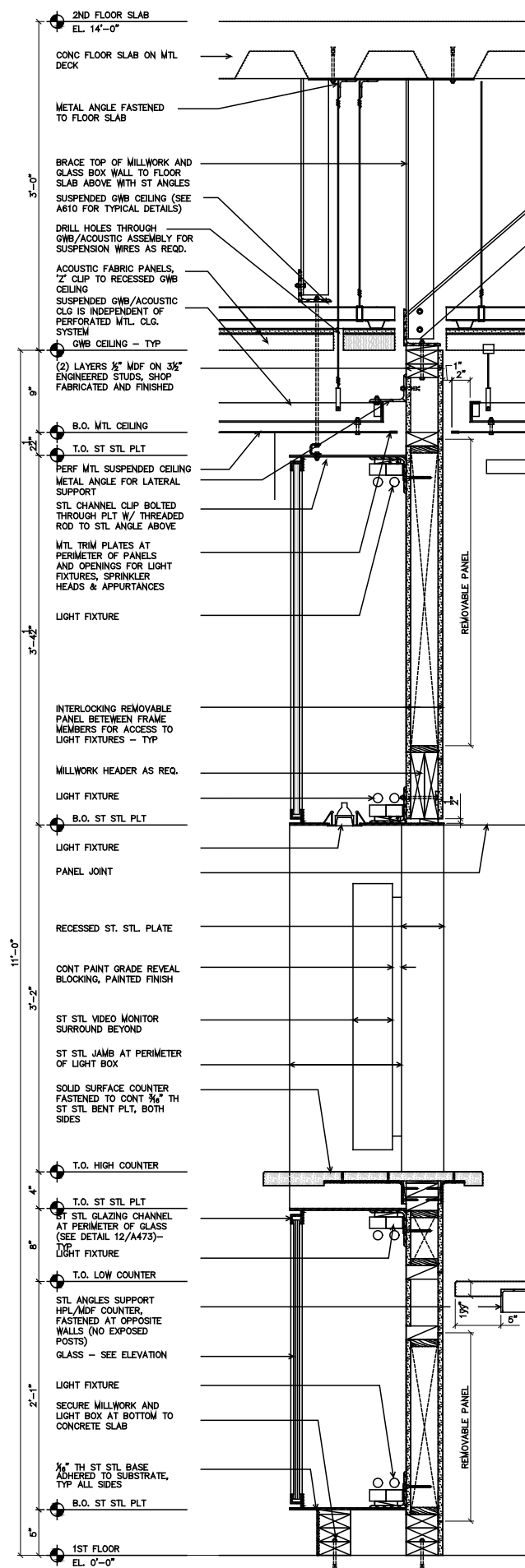


12 SECTION DETAIL  
SCALE: 1/8" = 1'-0"



10 LOBBY BRIDGE PLAN  
SCALE: 1/8" = 1'-0"

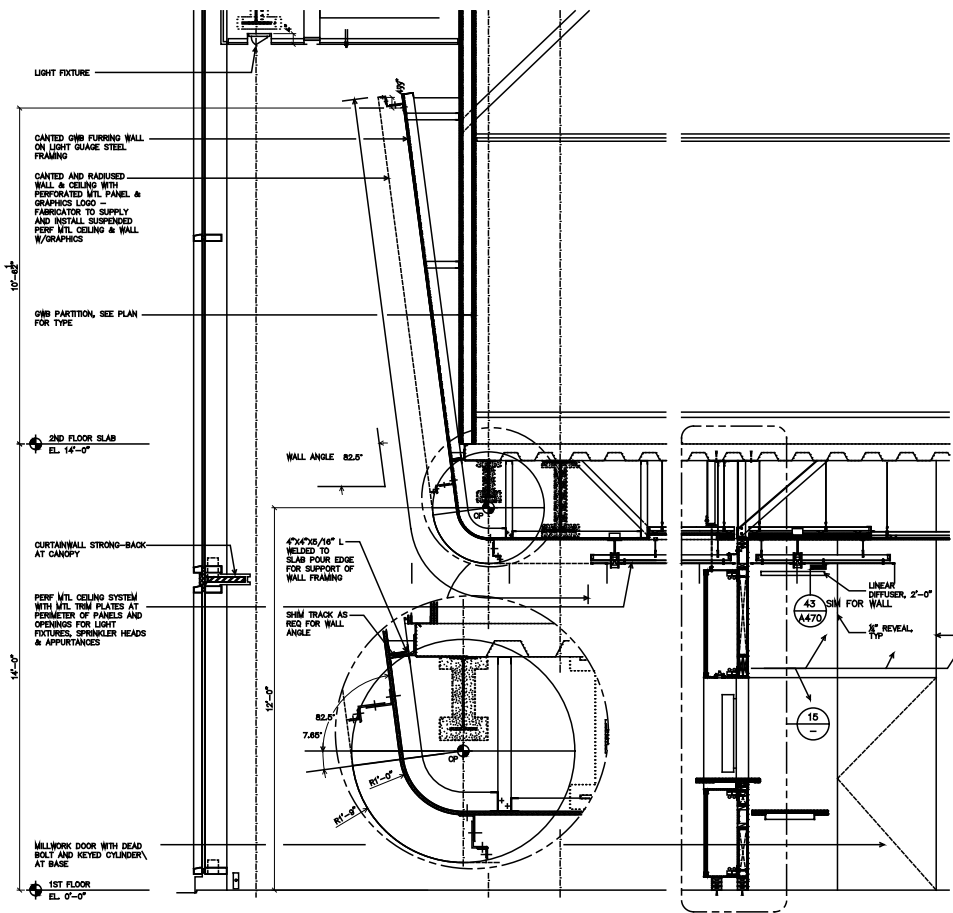
**WGBH**  
**LOBBY DESK**



15 SECTION DETAIL AT DESK

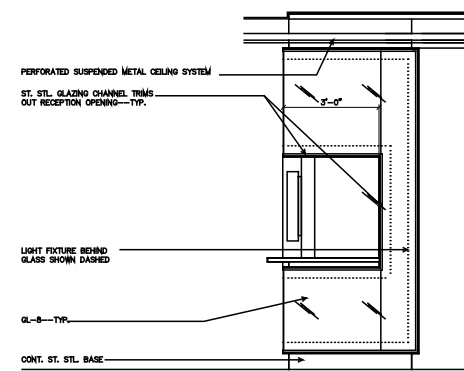
SCALE: 3"=1'-0"

d-glasswalllobby.dgn



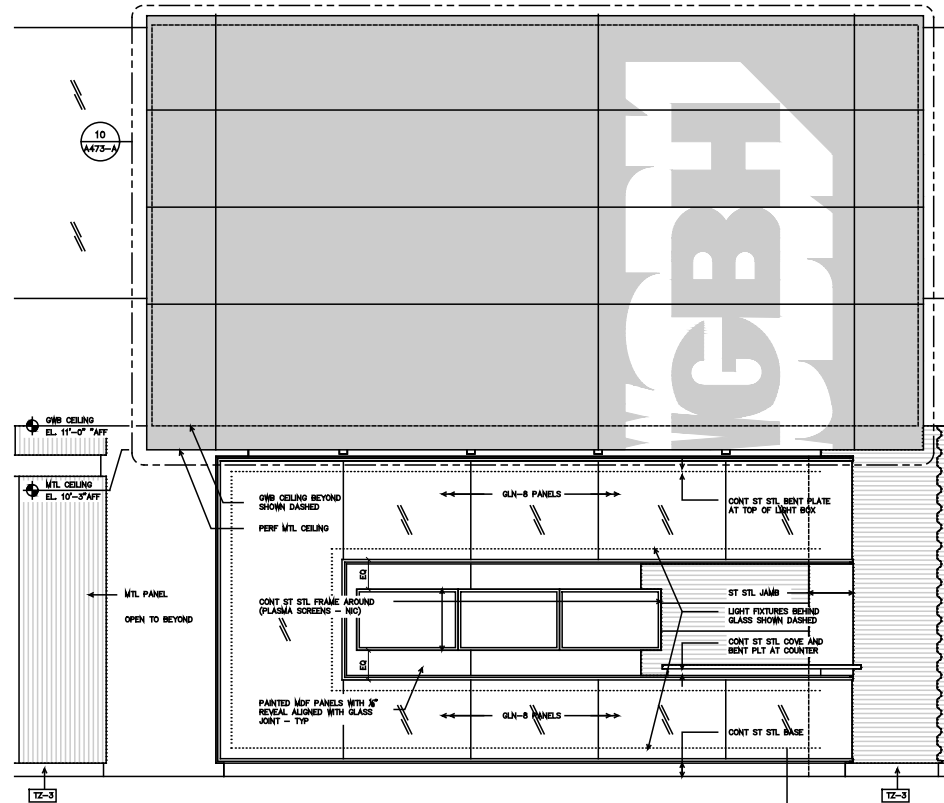
34 SECTION AT CANTED LOGO WALL AND RECEPTION DESK  
SCALE: 1/2"=1'-0"

1-dtl-lobbydesk.dgn



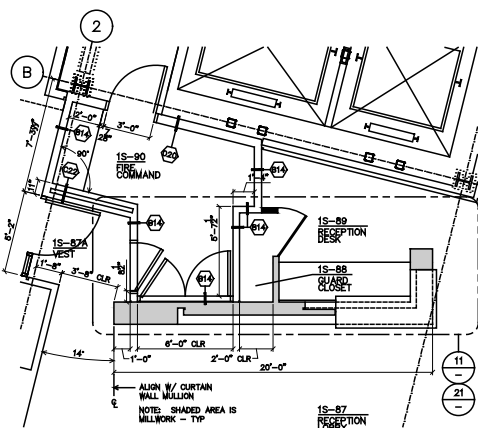
32 SIDE ELEVATION AT LOBBY RECEPTION DESK  
SCALE: 1/2"=1'-0"

1-dtl-lobbydesk.dgn



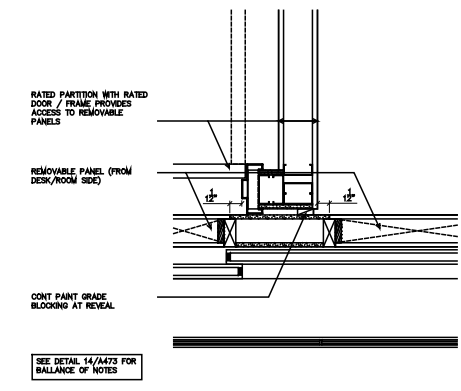
31 FRONT ELEVATION LOBBY RECEPTION DESK  
SCALE: 1/2"=1'-0"

1-dtl-lobbydesk.dgn



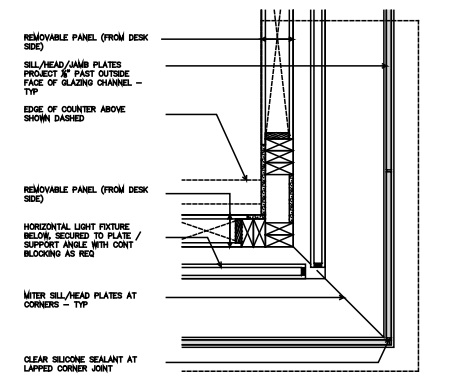
24 PARTIAL PLAN  
SCALE: 1/4"=1'-0"

1-dtl-lobbydesk.dgn



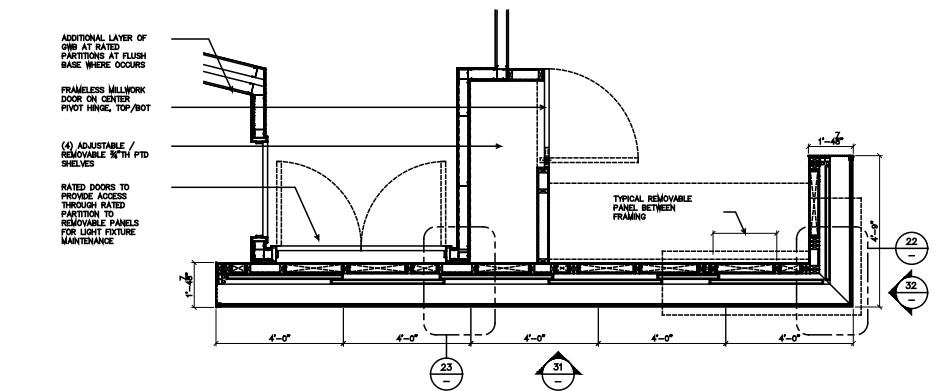
23 PLAN DETAIL AT WALL INTERSECTION  
SCALE: 1/2"=1'-0"

1-dtl-lobbydesk.dgn



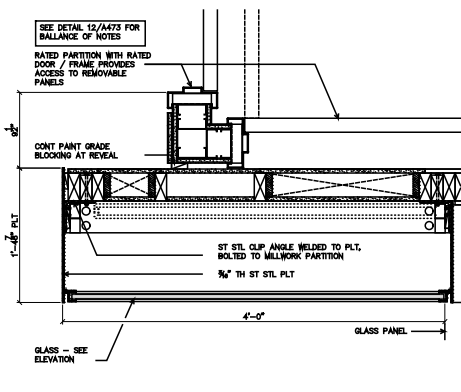
22 PLAN DETAIL AT CORNER  
SCALE: 1/2"=1'-0"

1-dtl-lobbydesk.dgn



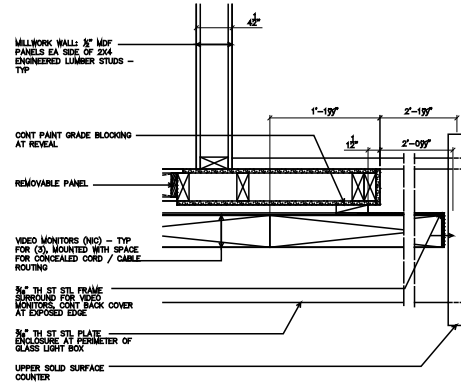
21 PARTIAL PLAN AT RECEPTION DESK: BELOW COUNTER  
SCALE: 1/2"=1'-0"

1-dtl-lobbydesk.dgn



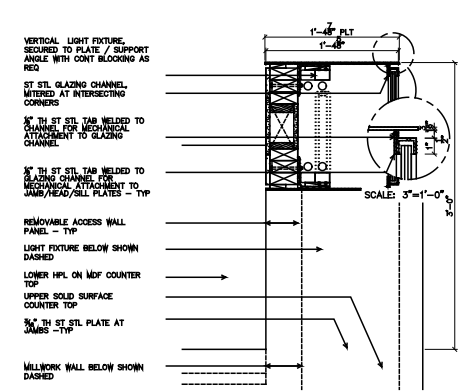
14 PLAN DETAIL AT RATED PARTITION  
SCALE: 1/2"=1'-0"

1-dtl-lobbydesk.dgn



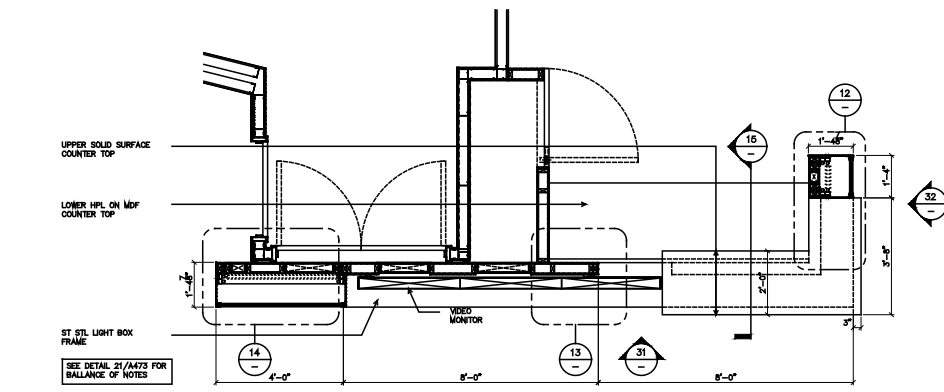
13 PLAN DETAIL AT VIDEO MONITOR JAMB  
SCALE: 1/2"=1'-0"

1-dtl-lobbydesk.dgn



12 PLAN DETAIL AT END OF WALL  
SCALE: 1/2"=1'-0"

1-dtl-lobbydesk.dgn



11 PARTIAL PLAN AT RECEPTION DESK: ABOVE COUNTER  
SCALE: 1/2"=1'-0"

1-dtl-lobbydesk.dgn



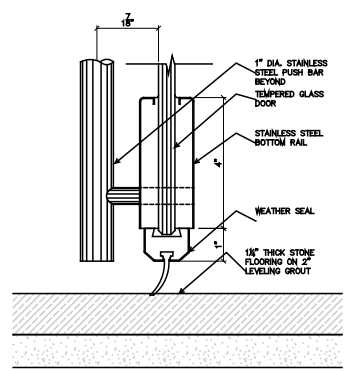
**WGBH**  
**BRIDGE INTERIORS**



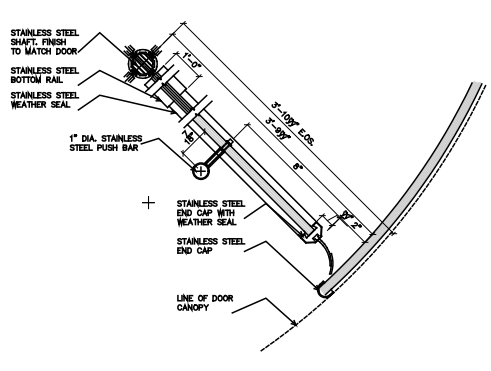


# WGBH

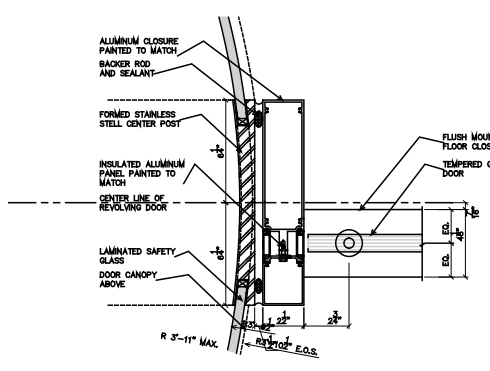
## ENTRANCE CANOPY DETAIL



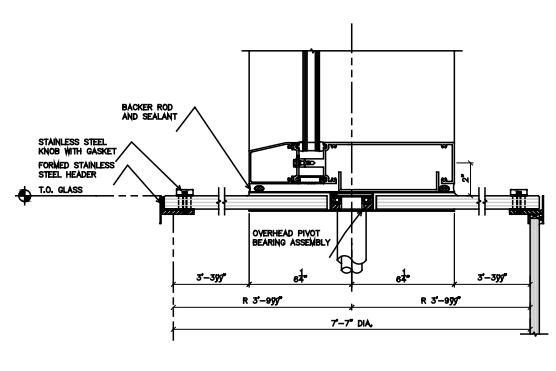
43 DETAIL @ REVOLVING DOOR BOTTOM RAIL  
SCALE: 6" = 1'-0"



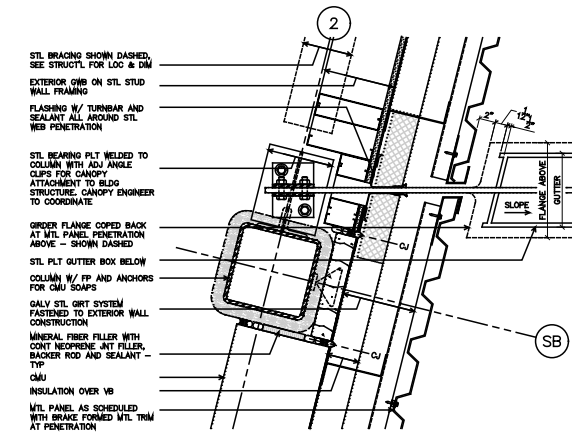
42 JAMB DETAIL @ REVOLVING DOOR ENTRANCE  
SCALE: 3" = 1'-0"



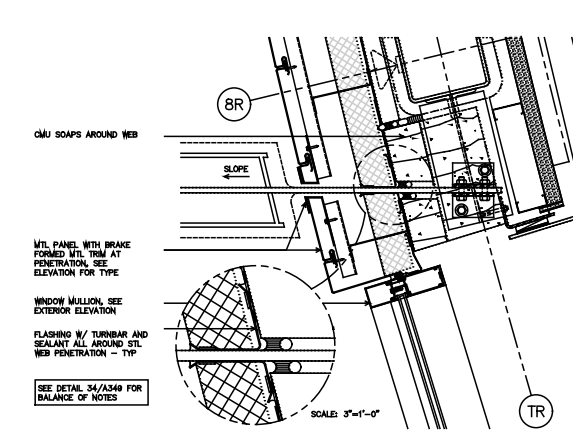
41 JAMB DETAIL @ REVOLVING DOOR  
SCALE: 3" = 1'-0"



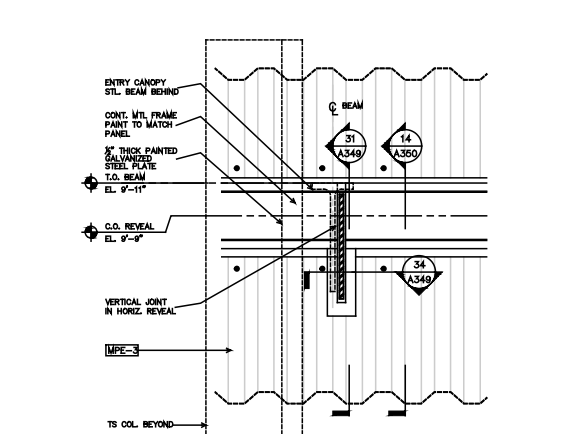
40 DETAIL @ OVERHEAD PIVOT  
SCALE: 3" = 1'-0"



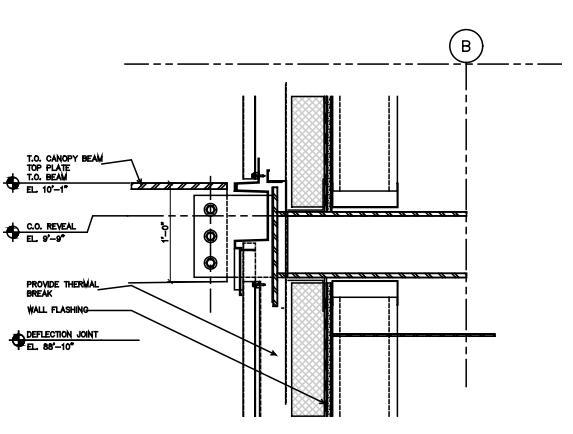
34 PLAN DETAIL AT STUDIO B  
SCALE: 1/8" = 1'-0"



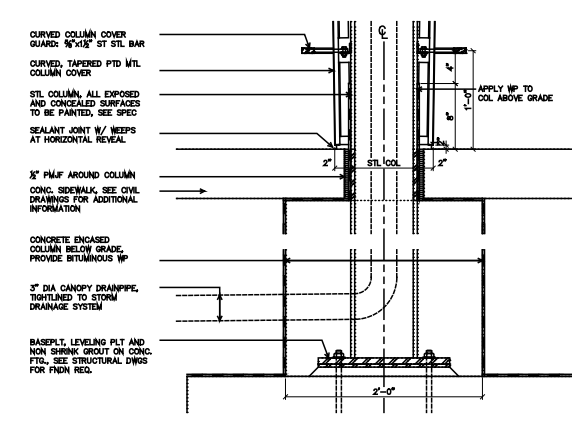
33 PLAN DETAIL AT THEATER  
SCALE: 1/8" = 1'-0"



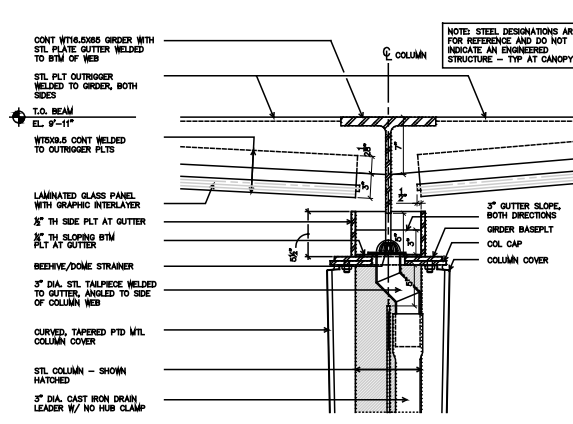
32 ELEVATION, BEAM END CONN.  
SCALE: 1/8" = 1'-0"



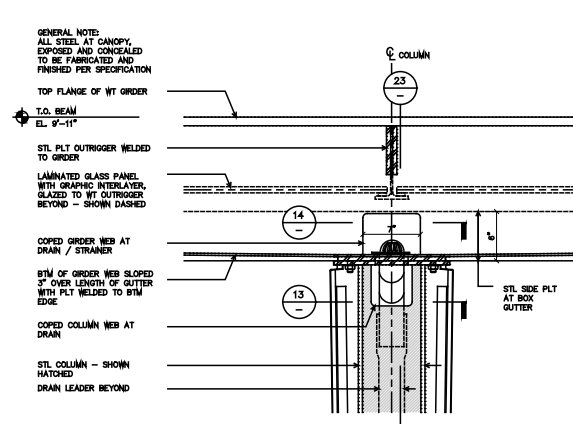
31 DETAIL @ METAL PANEL PENETRATION  
SCALE: 1/8" = 1'-0"



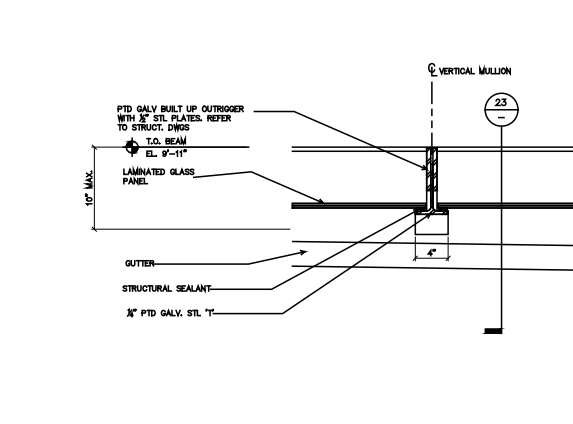
24 COLUMN BASE DETAIL  
SCALE: 1/8" = 1'-0"



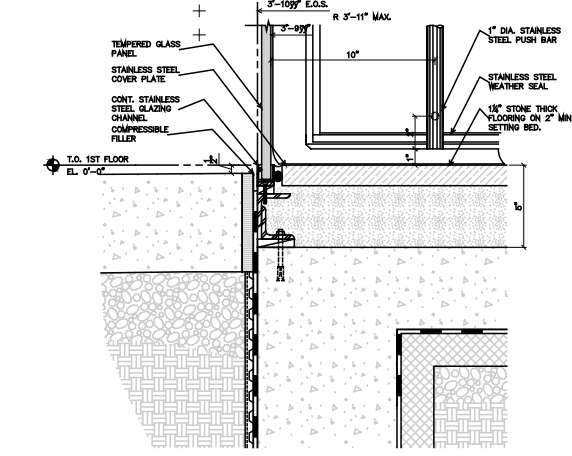
23 SECTION DETAIL @ CANOPY  
SCALE: 1/8" = 1'-0"



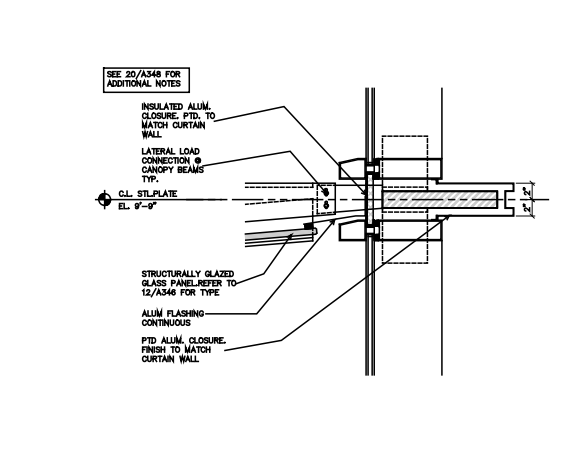
22 SECTION DETAIL @ CANOPY  
SCALE: 1/8" = 1'-0"



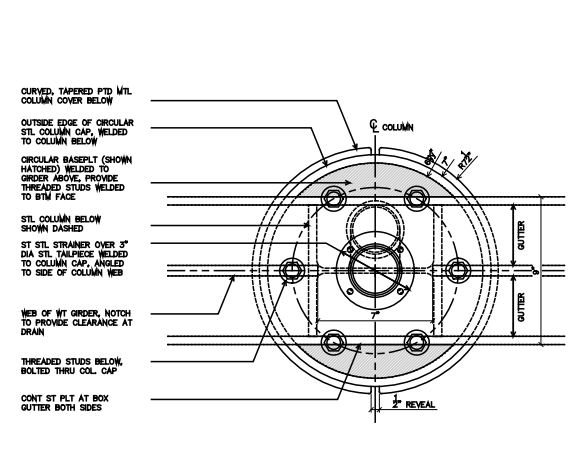
21 SECTION DETAIL @ CANOPY  
SCALE: 1/8" = 1'-0"



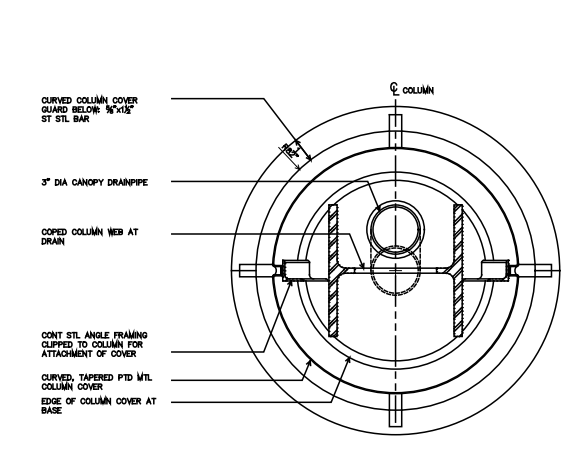
30 BASE DETAIL @ REVOLVING DOOR  
SCALE: 3" = 1'-0"



20 SECTION DETAIL @ CANOPY  
SCALE: 1/8" = 1'-0"



14 PLAN DETAIL @ CANOPY COLUMN / GUTTER  
SCALE: 3" = 1'-0"



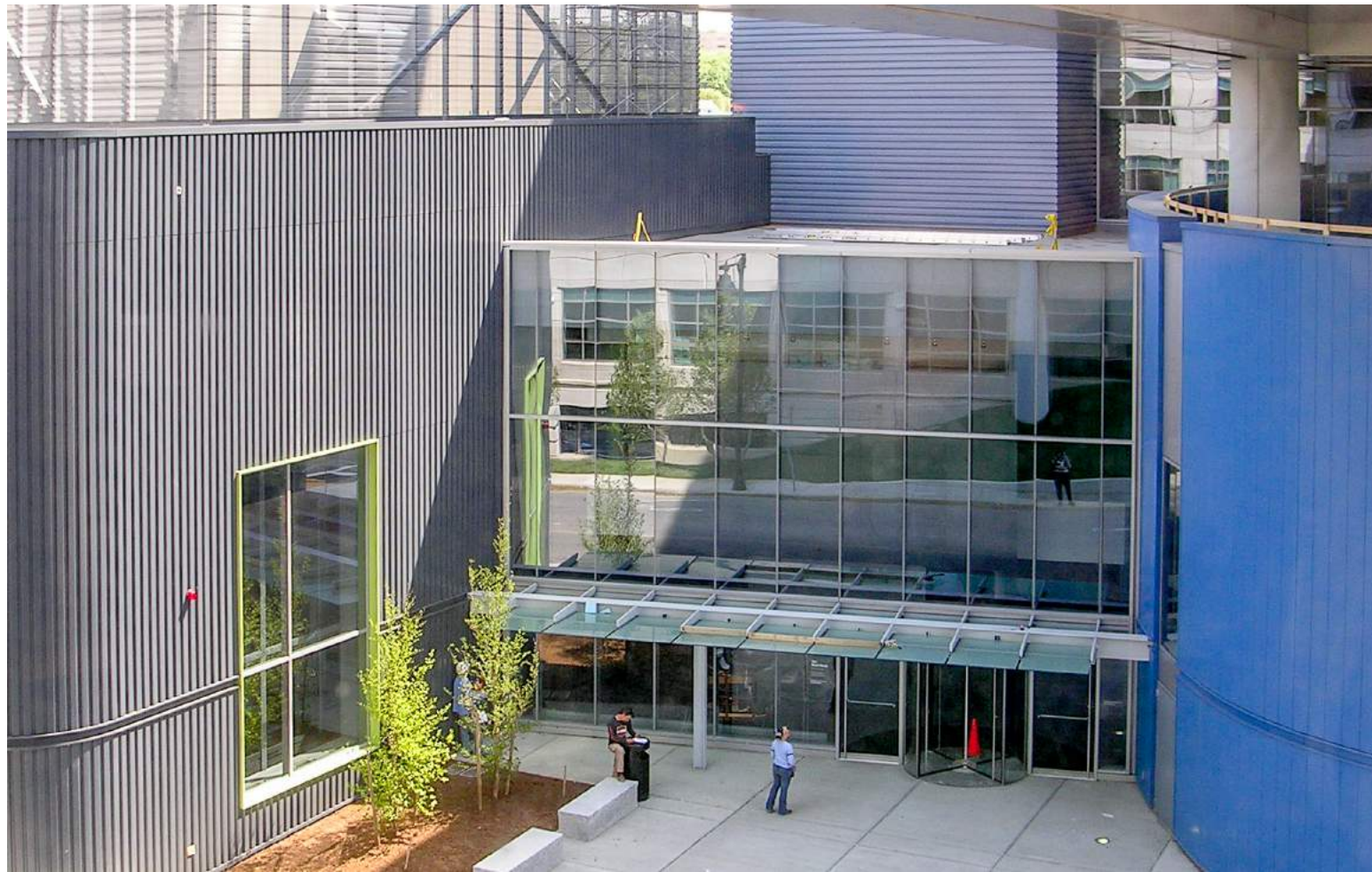
13 PLAN DETAIL @ CANOPY COLUMN  
SCALE: 3" = 1'-0"



**WGBH**

**TRUSS ERECTION  
EXTERIOR WALL MOCKUP**





**WGBH**  
**NORTH ENTRY**

