



NYU Faculty Research Lab

LOCATION
New York, NY

COMPLETION
2013

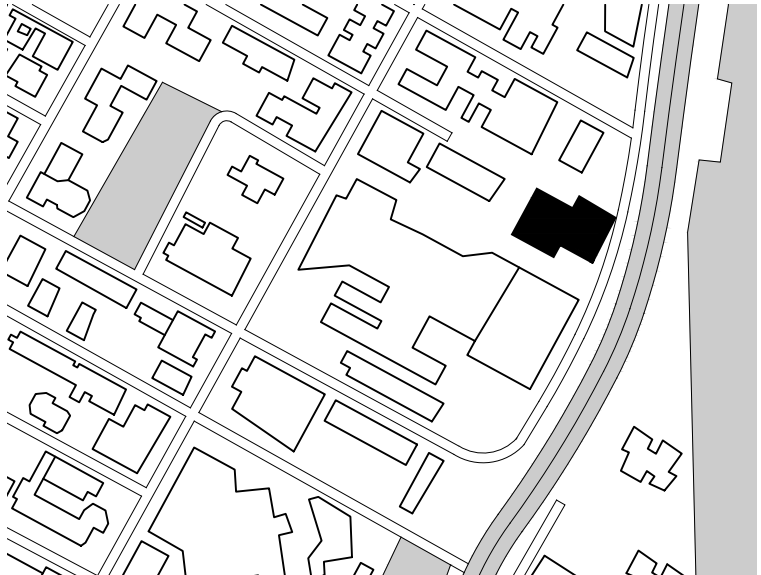
AREA
61,000 GSF Tenant Improvement

COST
25 Million

OWNER/DEVELOPER
New York University Langone Medical Center

DESIGN TEAM
ZGF Architects
Jacobs Consultancy
BR+A Consulting Engineers

CONSTRUCTION MANAGER
Turner Construction Company

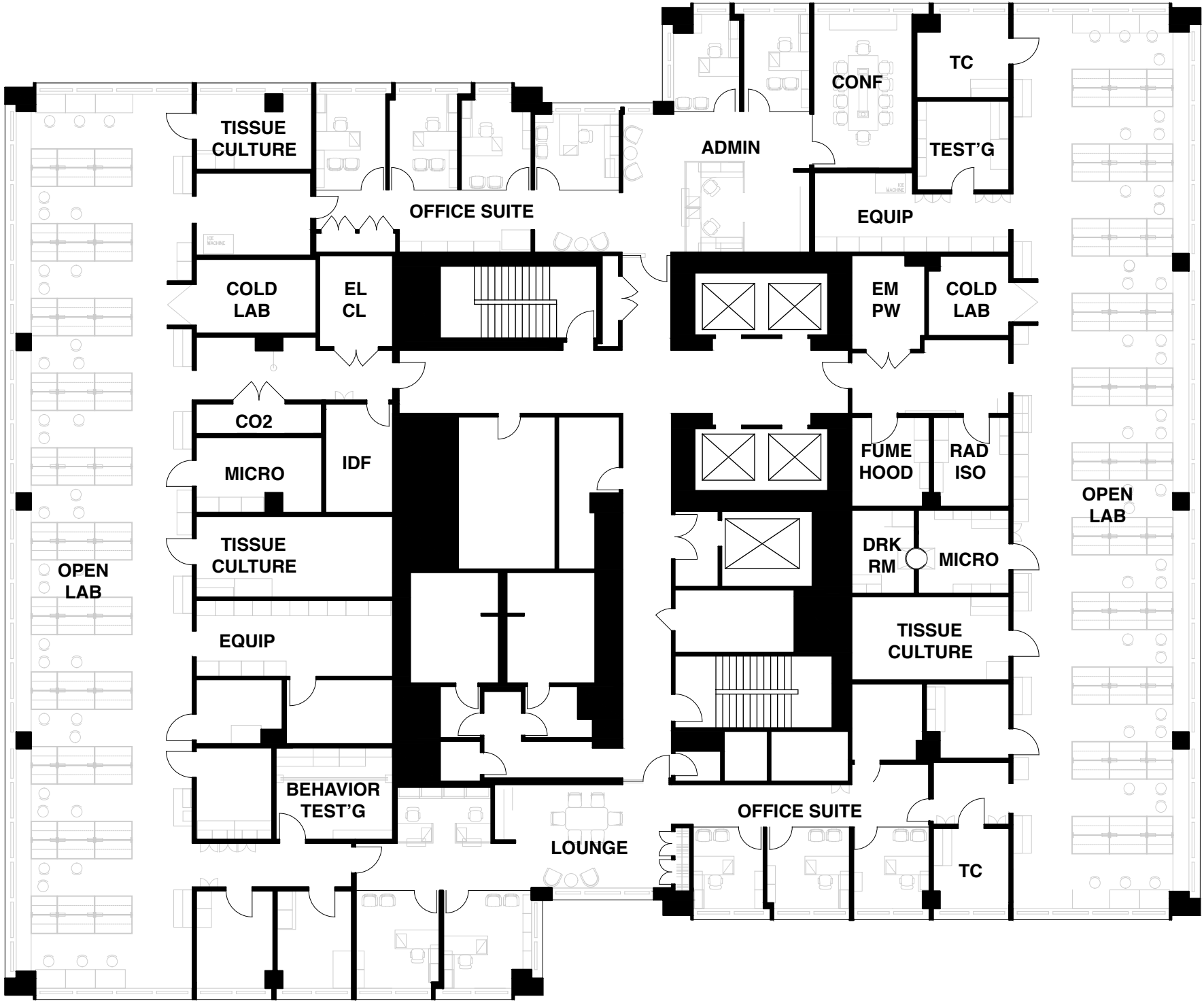


NYU Faculty Research Lab

PROJECT DESCRIPTION

New York University Langone Medical Center is a world class hospital and translational research facility. NYULMC expanded its laboratory research capabilities by constructing new state of the art laboratories at the newly constructed Alexandria Center for Life Science. This tenant improvement consists of 61,000sf on floors 3, 8 and 9.

Each floor contains approximately 3,500sf of Office/ Administration space, 5,500sf of Laboratory Support, and 6,000 sf of Open Laboratory space per floor. Laboratory support space includes a Central Glass Wash Room, Central Radio Isotope Fume Hood Room, and each floor providing Cold Labs, Tissue Culture, Instrument and Microscope Rooms. Open Lab space at the 9th floor includes an area for Electrophysiology Rigs.



LEVEL 8
LEVEL 3,7 SIM



NYU Faculty Research Lab

PROJECT DESCRIPTION

NYU was the first tenant to occupy these leased floor areas, however other building occupants and existing building systems required continued negotiation and design challenges through the design fit-out and construction.

Building capacity for mechanical systems; air CFMs, emergency power, fume exhausts, process steam and acid waste required close coordination with the design team engineers, lab planners and building manager.



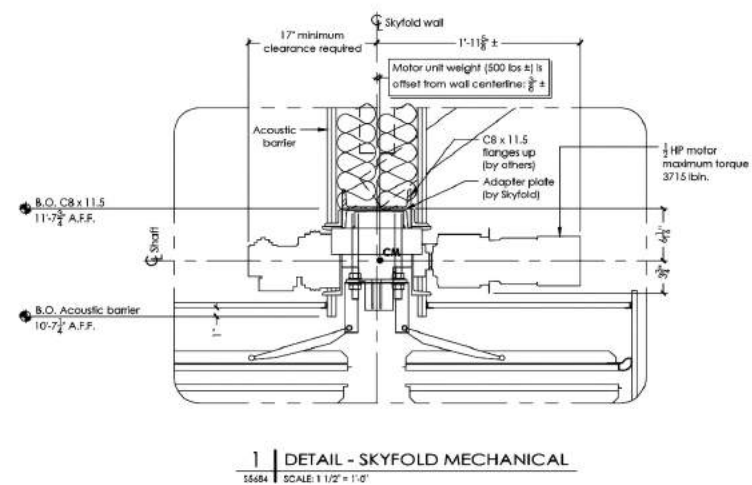
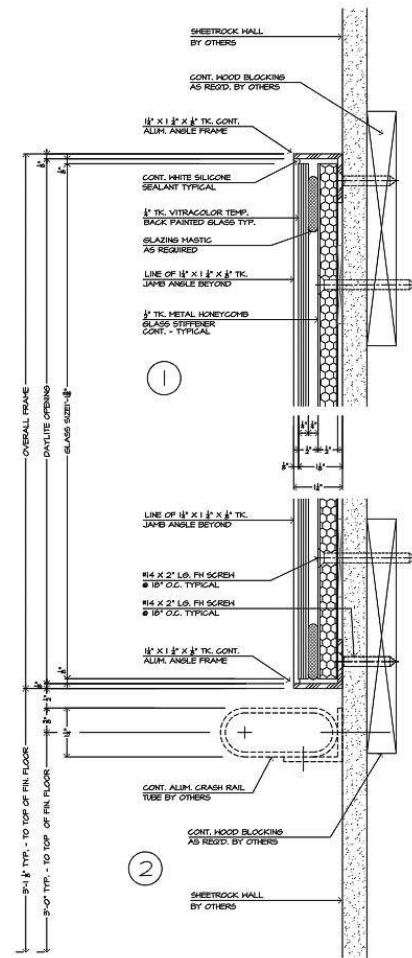
NYU Faculty Research Lab

INVOLVEMENT

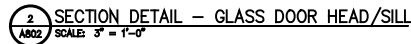
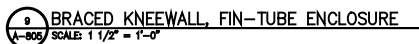
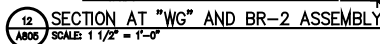
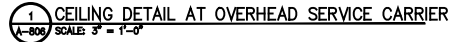
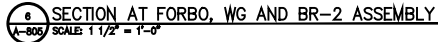
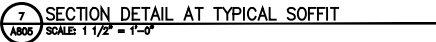
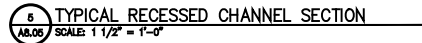
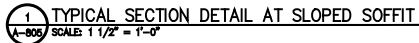
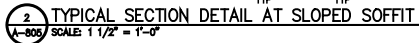
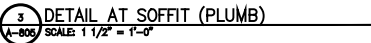
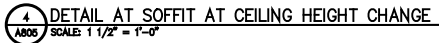
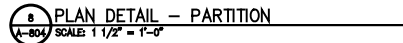
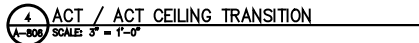
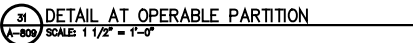
CA

Project Architect (4 months)

- Contract Administration OAC Representation
- Document Control
- Review of Submittals
- Coordination of A/E Additional Services
- Production of ASI/Sketch and Specification revisions
- RFI Responses
- Field Reports
- Non-conforming work memoranda
- Monthly Contractor payment requisition and COR review
- Punch listing and substantial completion notifications



DETAILS





NYU Faculty Research Lab

LAB BENCH

